

# Catmose College Expansion, Oakham

Design Proposals | August 2021 | P3



## CONTENTS

- 01 Project Brief
- 02 Schedule of Accommodation
- 03 Site Appraisal
- 04 Options Appraisal
- 05 Developed Plans
- 06 Model Views

## 01 Project Brief

### PROJECT DELIVERABLES:

- New self-contained teaching block
- To support proposed 1FE expansion in 11-16 yr pupil numbers
- In conjunction with wider programme of internal modifications
- Maximum developable area likely to be c. 1,300m<sup>2</sup>

### EDUCATION ETHOS:

- To build upon successful design considerations of main College
- Elimination of corridors and stairwells
- Circulation areas used as breakout and informal learning

### ADDITIONAL SPACE REQUIRED:

- 3no. Science Labs plus Prep
- 2no. multipurpose Design Tech classrooms plus storage (usage still TBC)
- 1no. ICT classroom
- 2no. Staff Work Rooms (1no. per floor)
- Pupil WCs for 150pp
- Staff / Accessible WCs
- Significant locker provision
- Breakout Space





## 02 Schedule of Accommodation

### PROPOSED EXPANSION

From Briefing Meeting July 2021

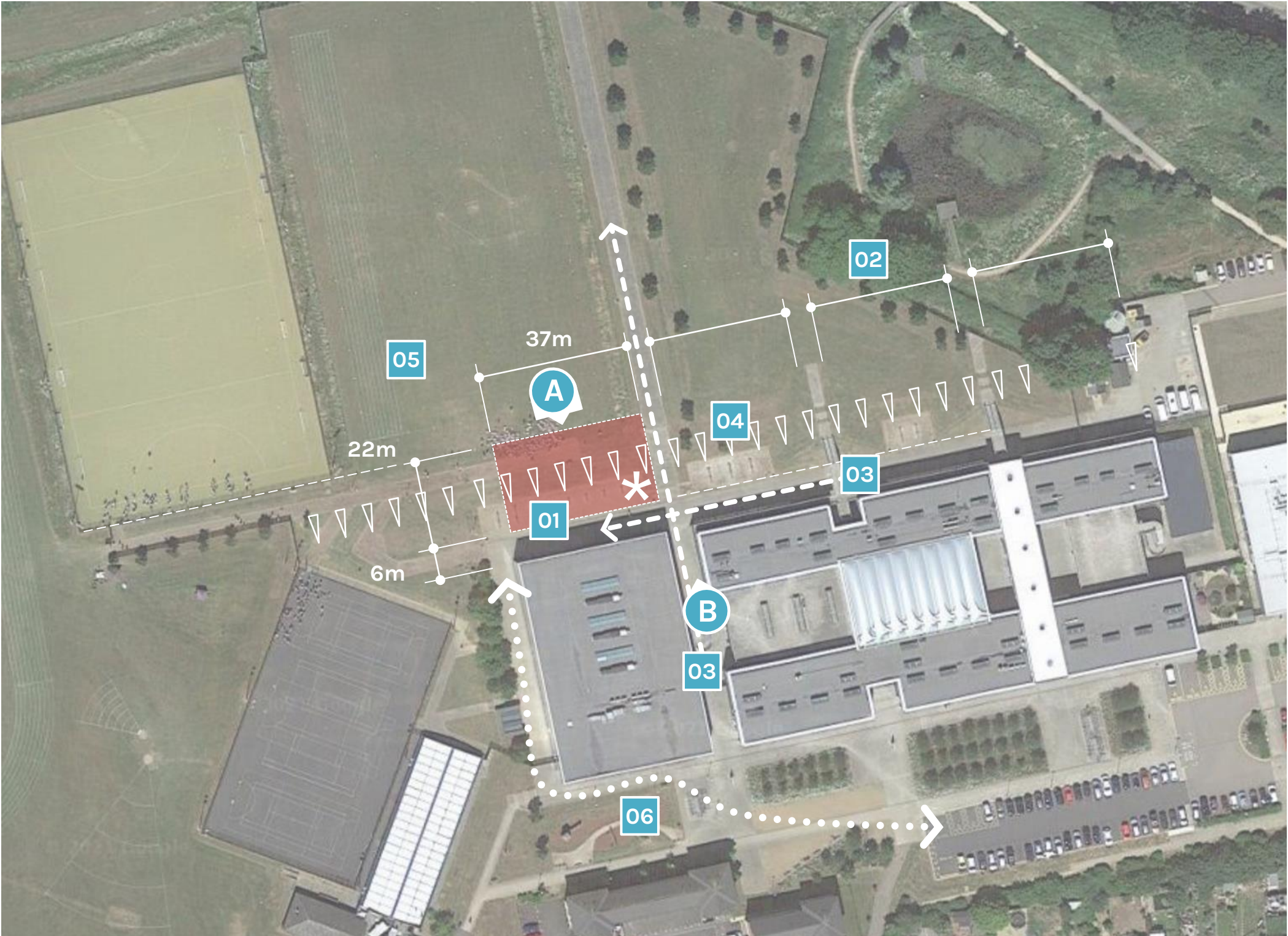
comments

net areas	ROOM AREA / m2	ROOM OCCUPANCY	NUMBER OF SPACES	TOTAL AREA / m2	TOTAL OCCUPANCY	
<b>Teaching</b>						
Science Laboratory	83	30	3	249	90	2021 DfE norm for General Science Lab (11-16 years)
Food Technology	121	30	1	121.25	30	2021 DfE norm for Food Tech 97m2 for 24pp / area increased pro-rata for 30pp
Design Technology Studio	104	30	1	103.75	30	2021 DfE norm for DT Studio 83m2 for 24pp / area increased pro-rata for 30pp
ICT Classroom	69	30	1	69	30	2021 DfE norm for ICT Rich / Business
<b>subtotal</b>			<b>6</b>	<b>543</b>	<b>180</b>	
<b>Leaarning Resources</b>						
Breakout	62	30	2	124	60	Integrated within circulation
<b>subtotal</b>			<b>2</b>	<b>124 m2</b>		
<b>Staff &amp; Admin</b>						
Staff Work Room / Office	21		2	42		1no. per floor
Chemical Store	7		1	7		
<b>subtotal</b>			<b>3</b>	<b>49 m2</b>		
<b>Storage</b>						
Science Prep	39		1	39		13m2 per Science Lab
Chemical Store	7		1	7		DfE norm
Food Tech Prep & Store	16		1	16		2021 DfE norm for Food Tech Prep 13m2 for 24pp / area increased pro-rata for 30pp
Design Tech Store	16		1	16		2021 DfE norm for DT Store 13m2 for 24pp / area increased pro-rata for 30pp
Staff Work Room Store	6		2	12		
Lockers	21		2	42		Integrated within circulation / breakout
<b>subtotal</b>			<b>8</b>	<b>133 m2</b>		
<b>TOTAL NET AREA</b>				<b>849 m2</b>		
<b>non-net areas</b>						
<b>Non-Net Areas</b>						
Pupil WCs	3.0		8	24		Unisex provision / 1 per 20pp for 150pp (BS 6465 Schools formula)
Staff / AWCs	4		2	8		1no. per floor
Cleaners Store	2		2	4		1no. per floor
Server Hub Room	8		1	8		
Plant	20		1	20		
Circulation	212		1	212		25% of Total Net Area
Partitions	42		1	42		5% of Total Net Area
<b>subtotal</b>				<b>319 m2</b>		
<b>TOTAL NON-NET AREA</b>				<b>319 m2</b>		
<b>TOTAL GIFA</b>				<b>1,167 m2</b>		

TARGET GIFA  
**1,200-1,250m2**

03 Site Appraisal

01	SITE SELECTED BY FEASIBILITY STUDY: DEVELOPMENT FOOTPRINT c. 37 x 22m
02	ESTABLISHED ARCHITECTURAL RHYTHM OF EXISTING COLLEGE
03	PRINCIPAL EXTERNAL PUPIL MOVEMENT ROUTES
04	SIGNIFICANT LEVEL CHANGE ACROSS SITE: c.3m
05	IMPACT ON EXISTING PLAYING FIELDS TO BE MINIMISED
06	EXTENDED CONSTRUCTION ACCESS ROUTE TO BE REVIEWED WITH COLLEGE & MAIN CONTRACTOR
*	OPTIMUM LOCATION FOR NEW BLOCK ENTRANCE



PANORAMA A





PHOTOGRAPH B

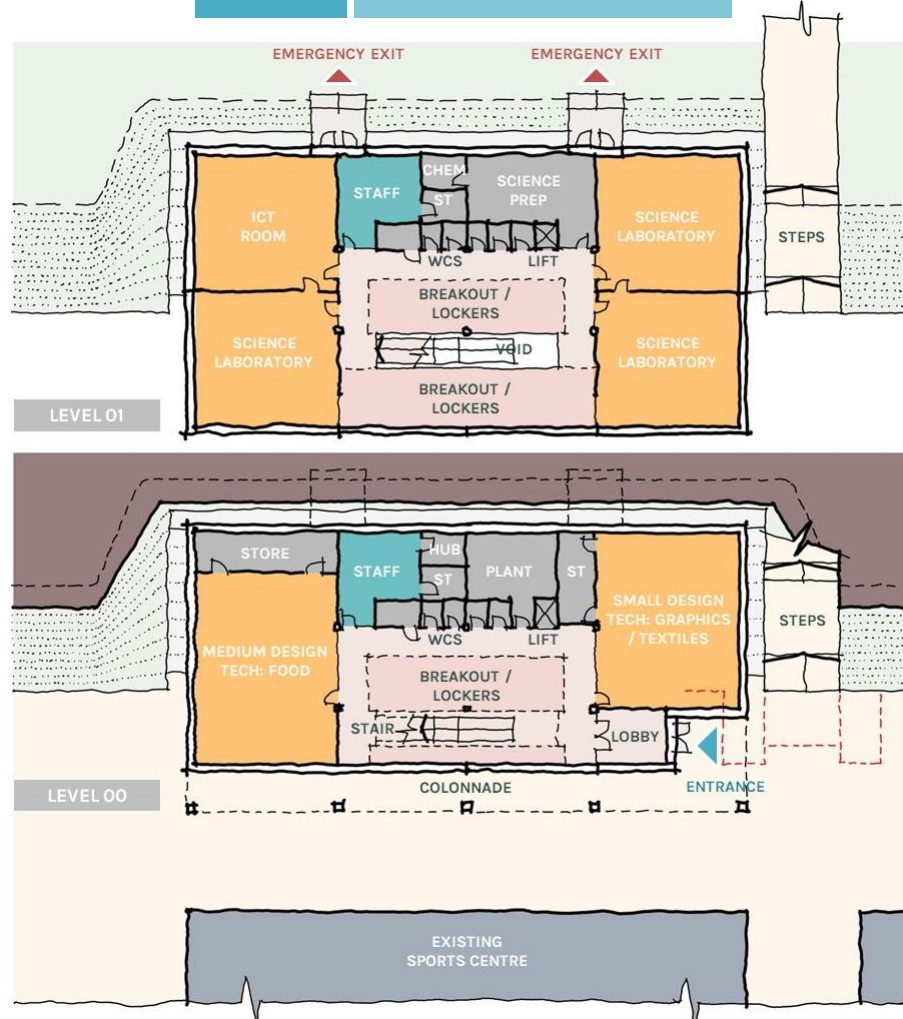


PANORAMA A



## 04 Options Appraisal

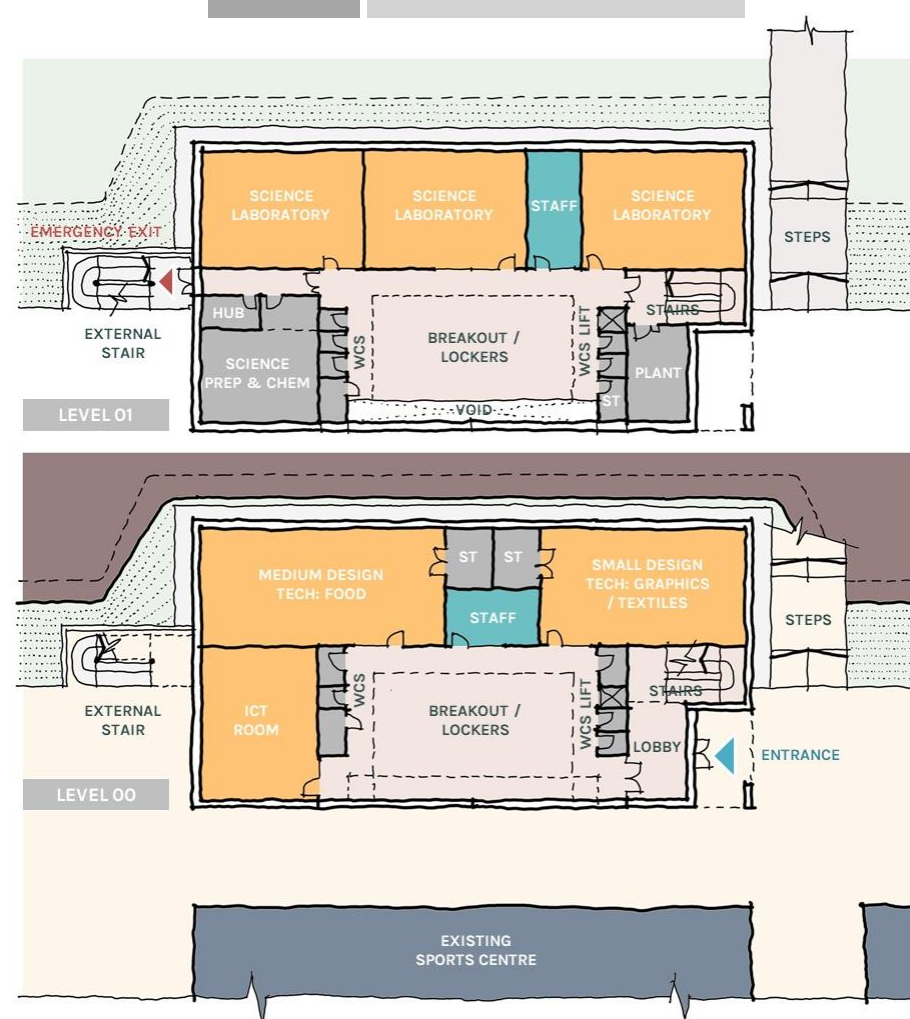
OPTION  
01  
GIFA  
1,180m<sup>2</sup>



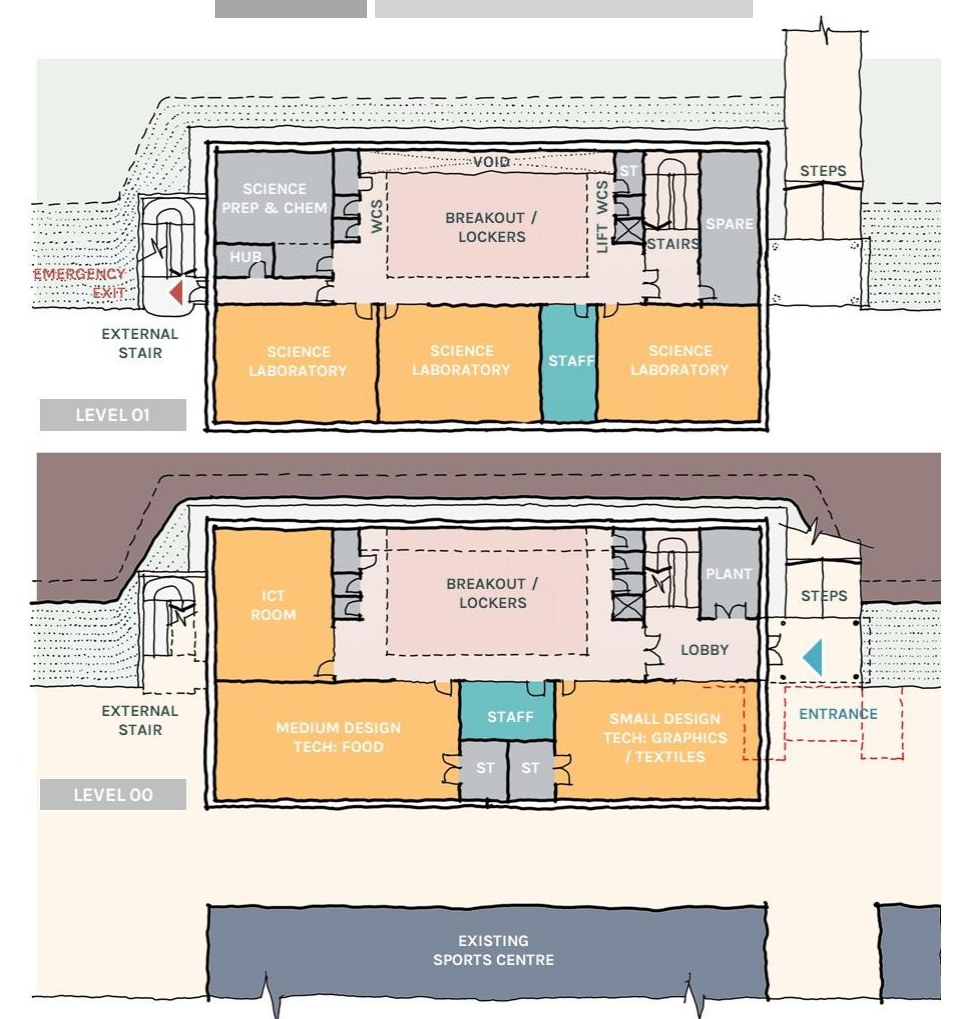
### STRATEGY

- Entrance location responds to principal approach
- Partial retaining wall to northern half of Level 00
- Emergency escape from Level 01 to fields
- Central accommodation stair within breakout
- No internal enclosed stairs required
- Colonnade to main pedestrian route
- Opportunities for showcasing activities

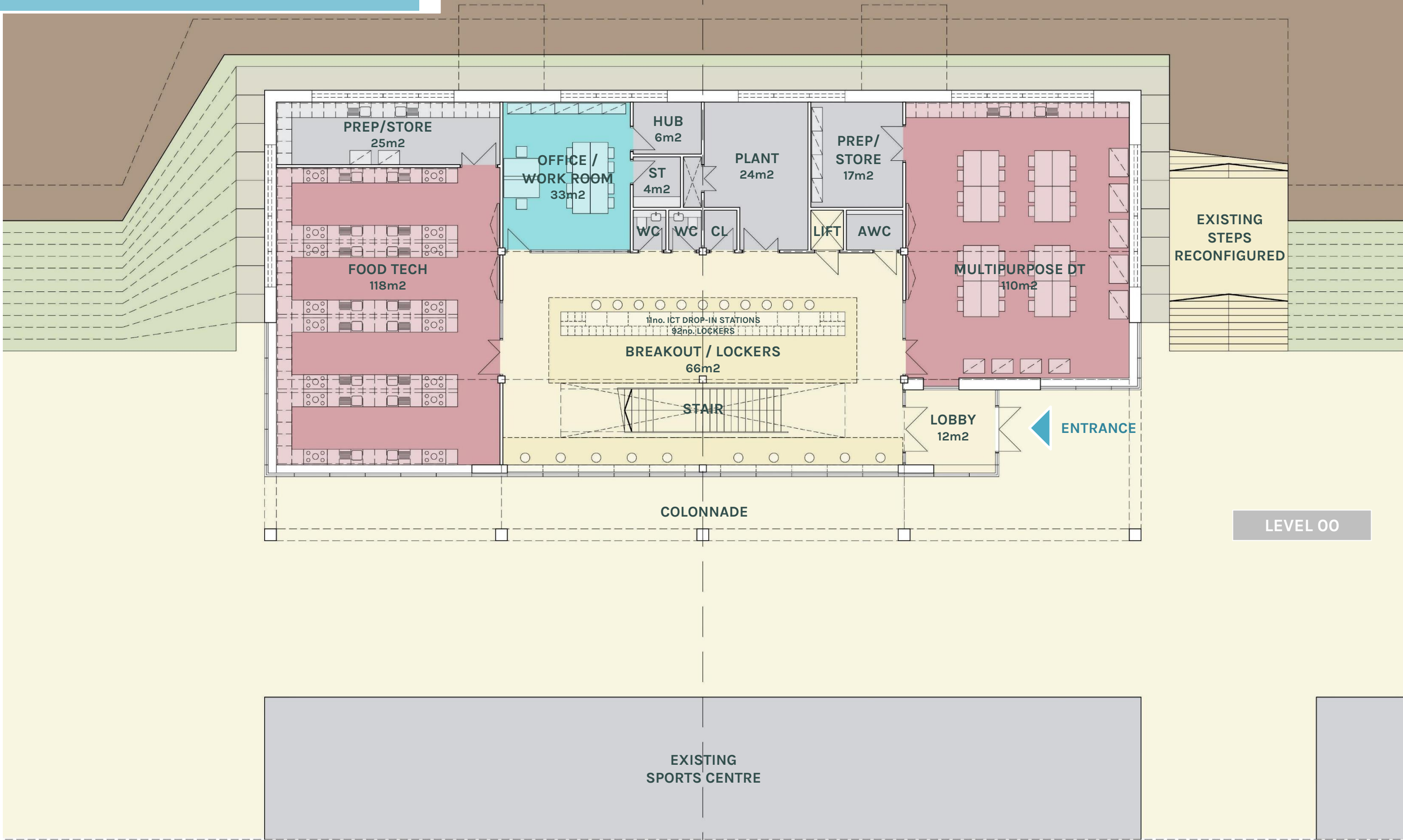
OPTION  
02  
GIFA  
1,245m<sup>2</sup>



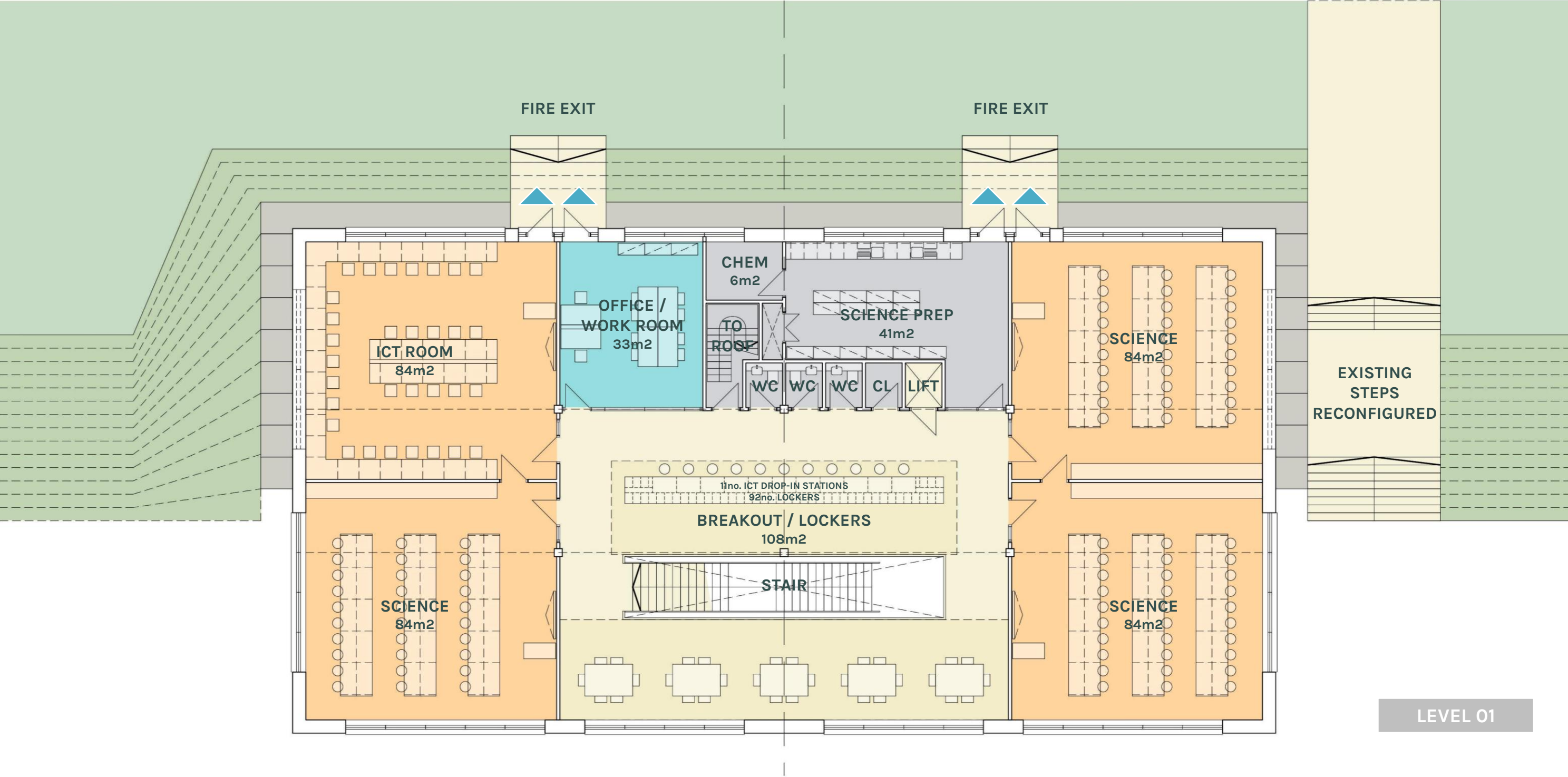
OPTION  
03  
GIFA  
1,295m<sup>2</sup>



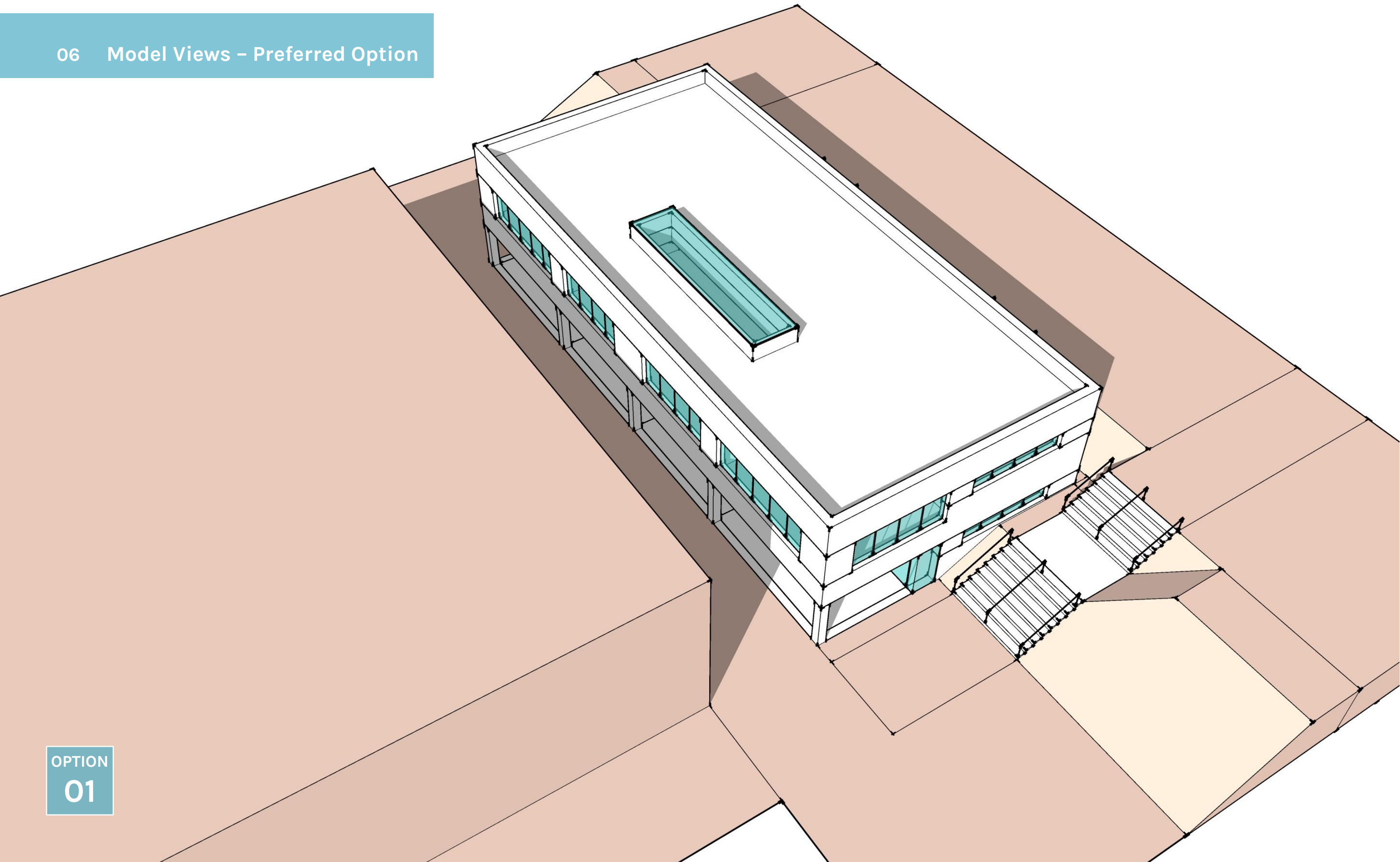
PREFERRED  
OPTION





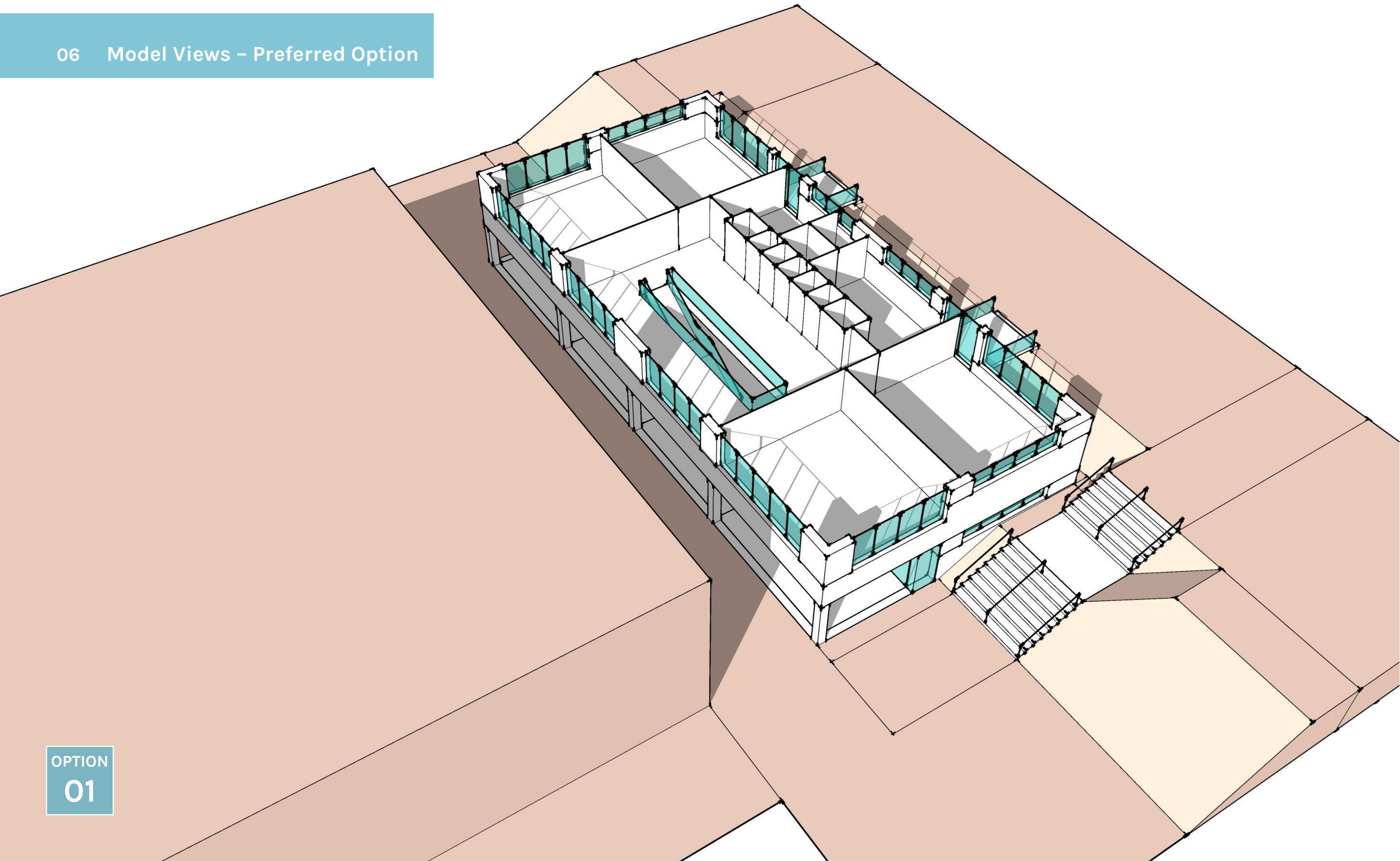






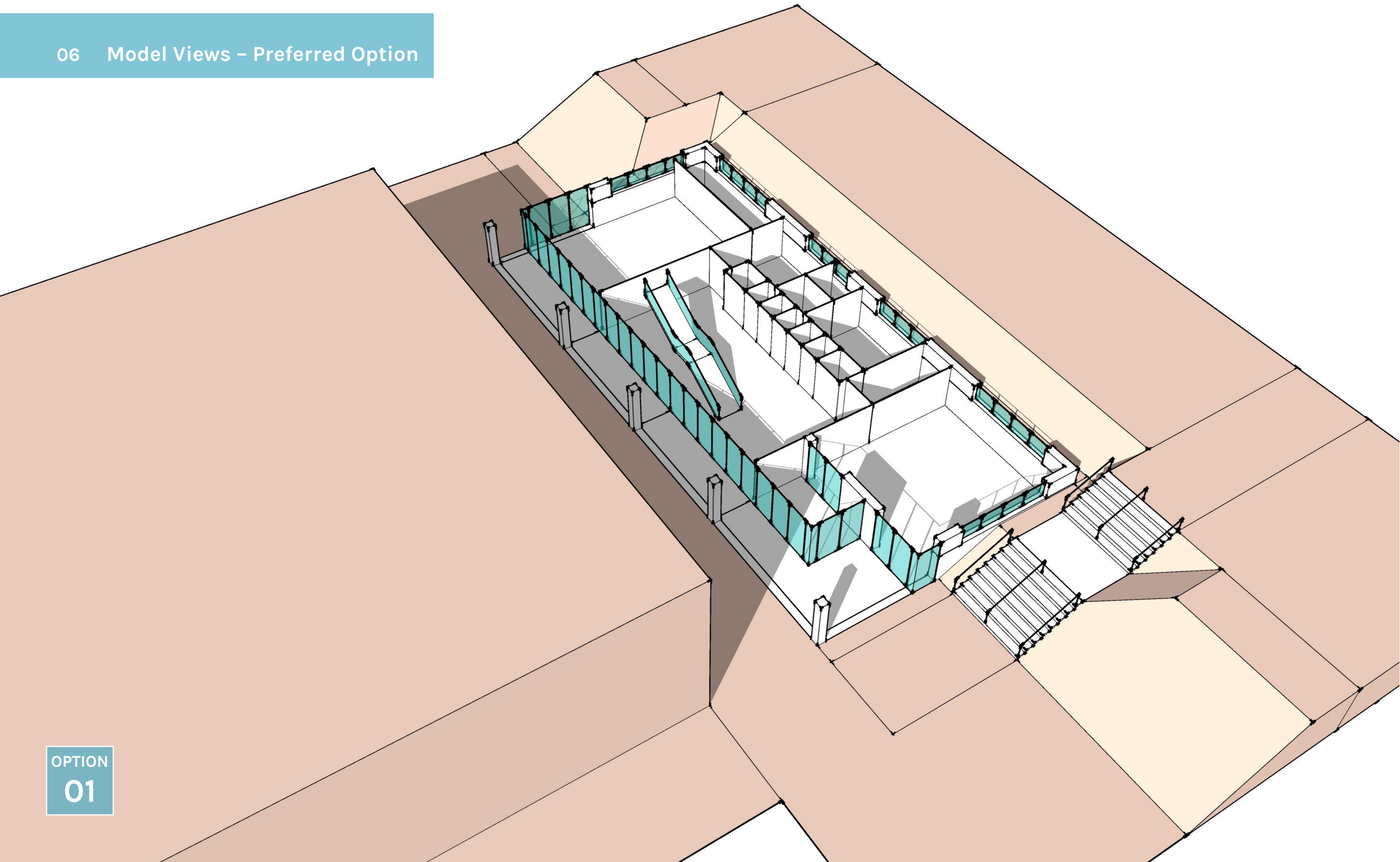
OPTION  
01





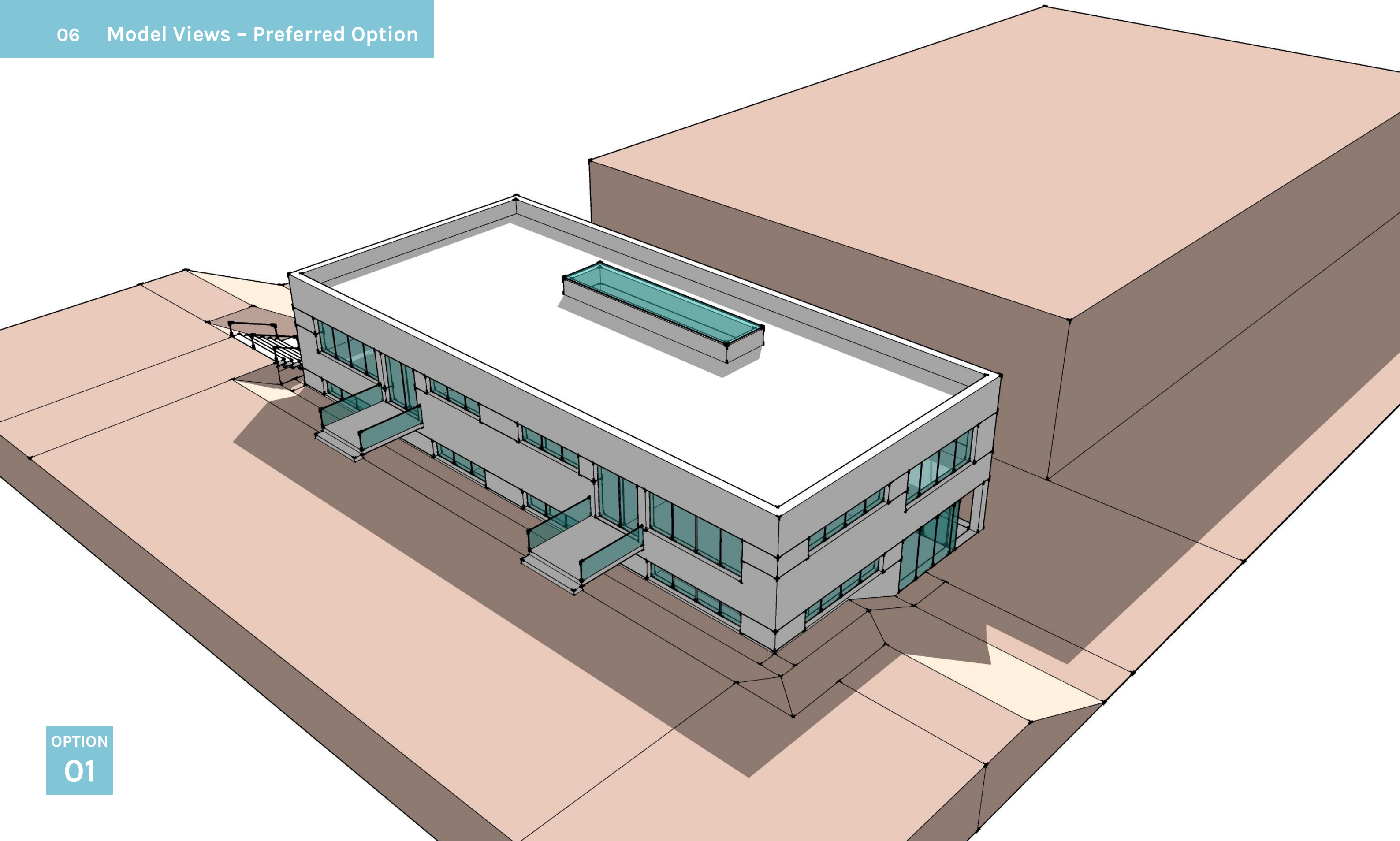
OPTION  
01





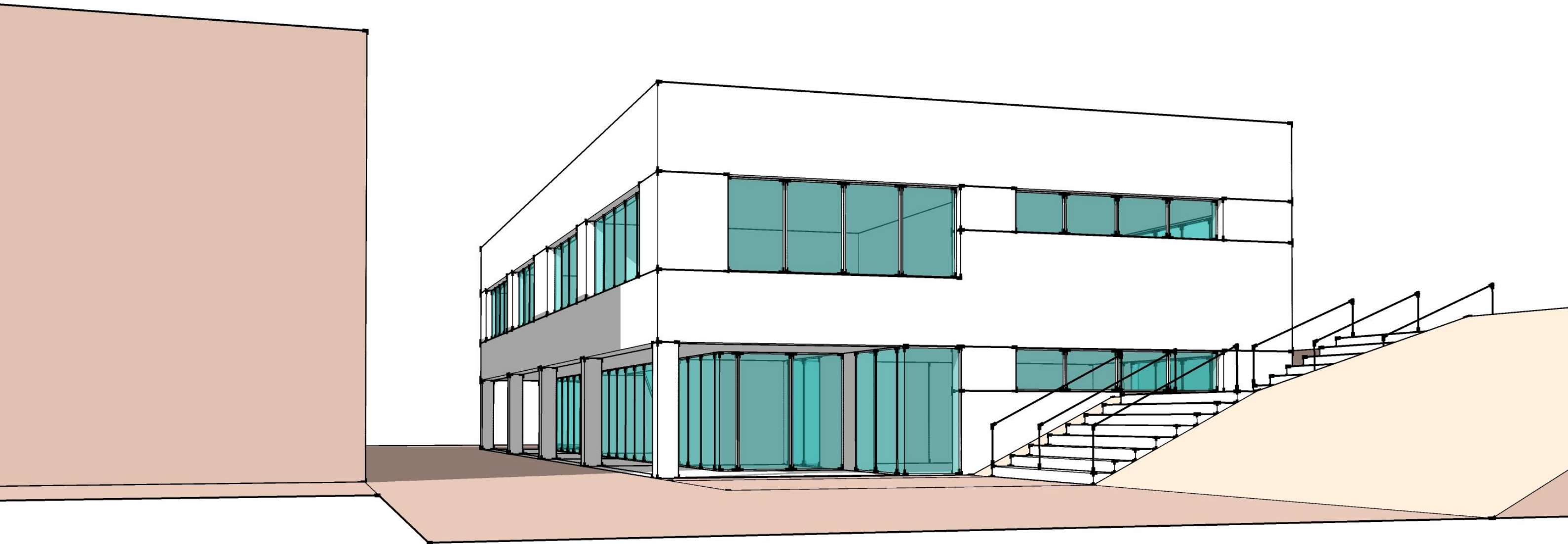
OPTION  
01



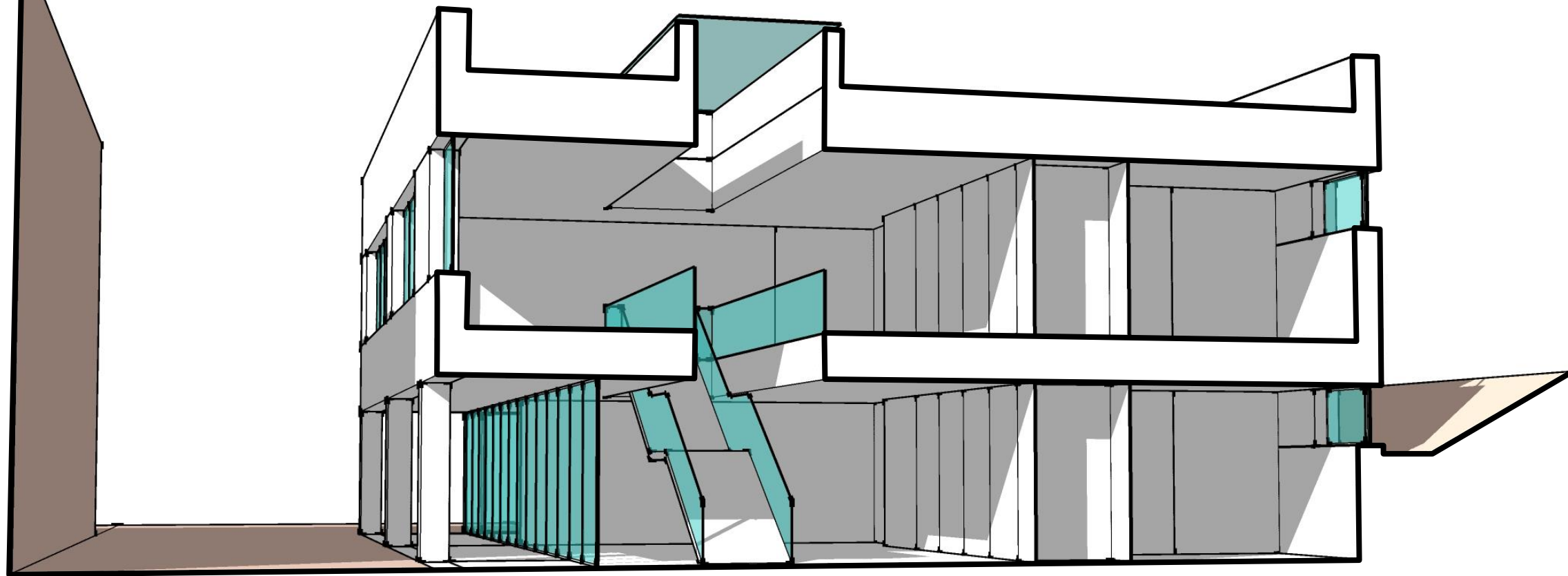


OPTION  
01





OPTION  
01



OPTION  
01





#### THE CREATIVE QUARTER

Nottingham Headquarters

13 St Peter's Gate, Nottingham,  
NG1 2JF

#### THE CAPITAL

London

31/35 Kirby Street, London,  
EC1N 8TE

#### THE SECOND CITY

Birmingham

The Lewis Building, Bull Street.  
B4 6EQ

#### THE FAR EAST

Hangzhou, China

2002 Ruijing International  
Building, No. 198 Wuxing Road,  
Qianjiang New District

#### DIRECTORS

**Richard Flisher**  
Managing Director

[richard.flisher@cpmg-architects.com](mailto:richard.flisher@cpmg-architects.com)

**Nick Gregory**  
[nick.gregory@cpmg-architects.com](mailto:nick.gregory@cpmg-architects.com)

**Hugh Avison**  
[hugh.avison@cpmg-architects.com](mailto:hugh.avison@cpmg-architects.com)

**Paul Bodill**  
[paul.bodill@cpmg-architects.com](mailto:paul.bodill@cpmg-architects.com)

**Sara Harraway**  
[sara.harraway@cpmg-architects.com](mailto:sara.harraway@cpmg-architects.com)

**Anil Parmar**  
[anil.parmar@cpmg-architects.com](mailto:anil.parmar@cpmg-architects.com)

**Chris White**  
[chris.white@cpmg-architects.com](mailto:chris.white@cpmg-architects.com)